



First Steps Quick Guide



ECOSYS
M5521cdw



1. PREFACE

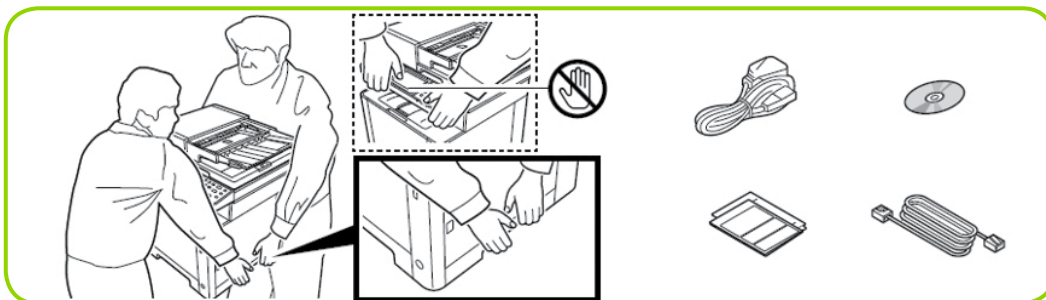
This guide only provides basic advice to get you up and running as quickly as possible. A detailed operation guide is available on our website.

For your convenience, Vox offers a remote or onsite installation option, should you need further assistance with the setup of your printer. A Vox engineer will either assist you remotely or at your premises, depending on the option you select.

Please email printsupport@voxtelcom.co.za should you be interested in remote or onsite support. Please note this is a billable engagement.

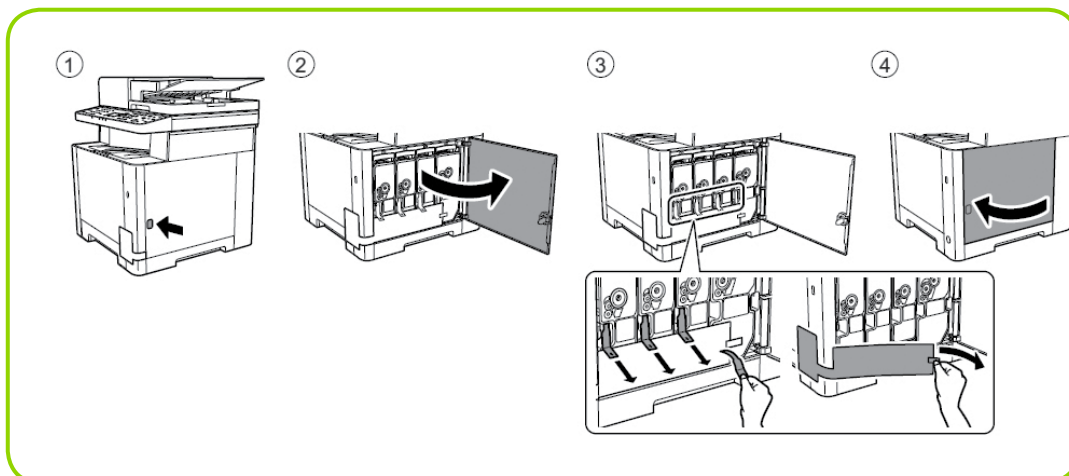
2. UNBOXING YOUR PRINTER

Please make sure that all the orange strips are removed from the printer in order to ensure proper operation



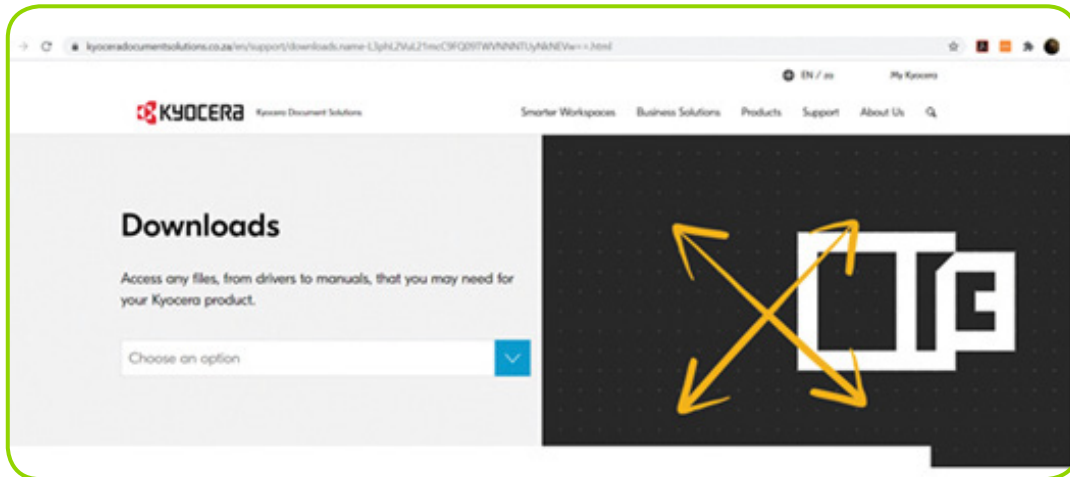
3. SETTING UP THE TONER

Please make sure that all the orange strips are removed from the printer in order to ensure proper operation

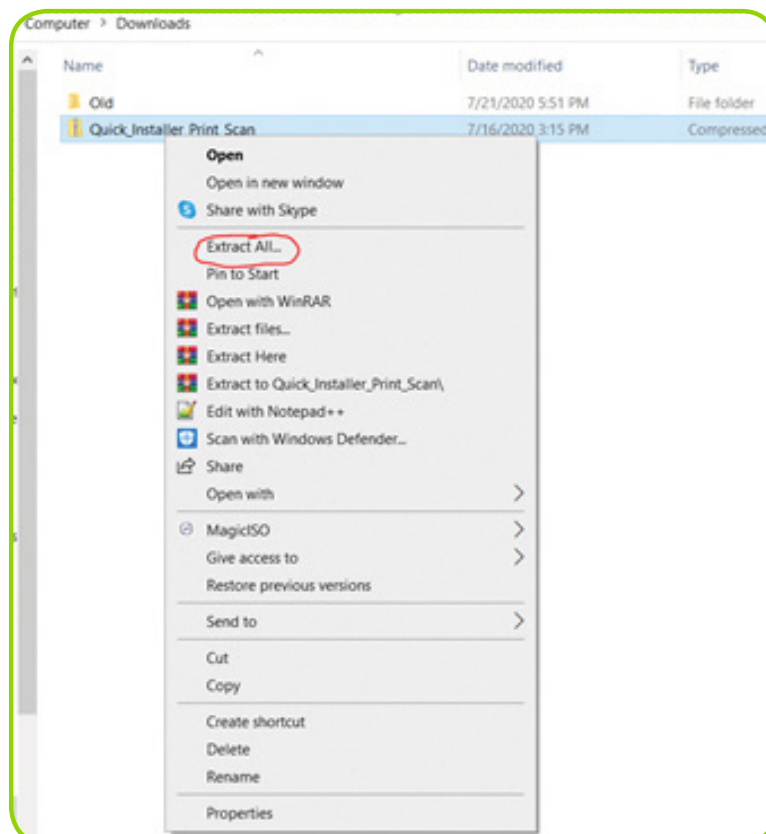


4. WORKSTATION DRIVER & UTILITIES INSTALLATION

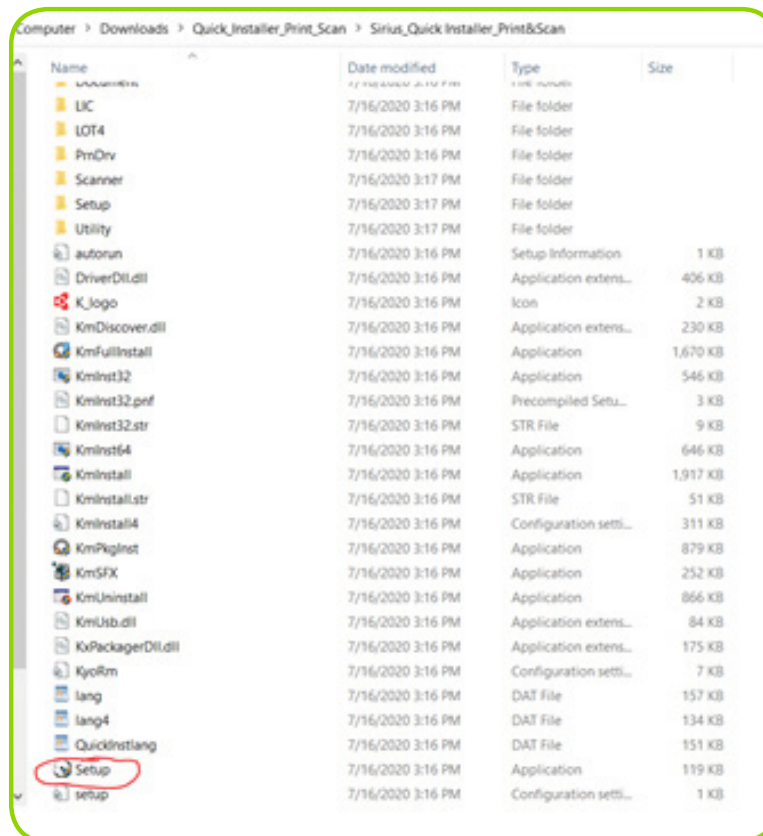
1. Download the printer drivers from Kyocera's website.
 - URL: <https://www.kyoceradocumentsolutions.co.za/en/support/downloads.html>
2. Select your model



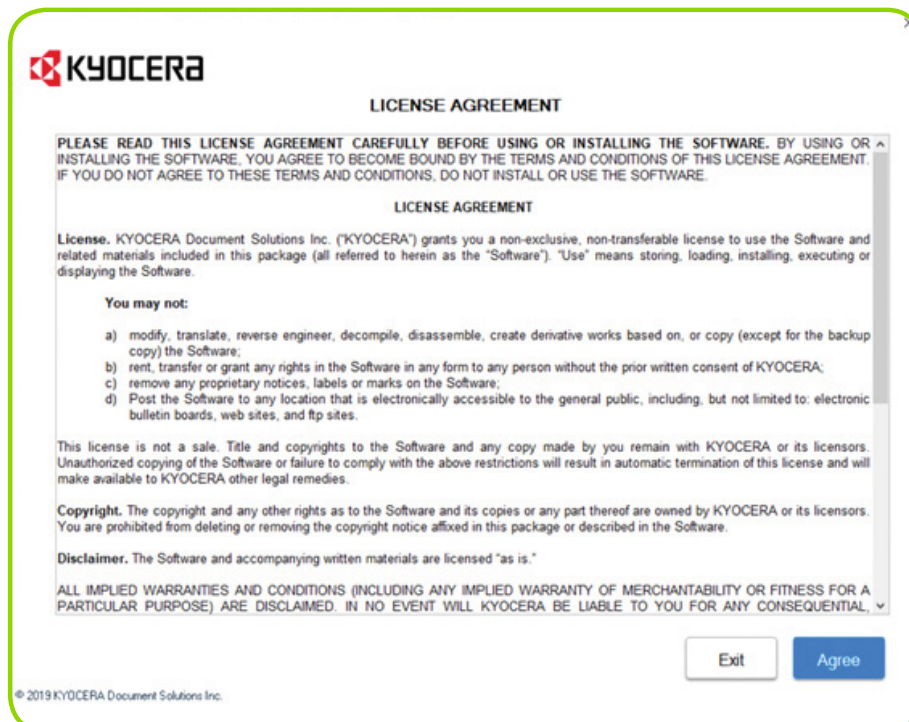
3. Select the relevant driver based on the client's operating system and click on download, use the KX driver where possible.
4. Find the ZIP file in your downloads folder, right click and select Extract all



5. Open the extracted folder, find the setup icon and double click to run the setup.



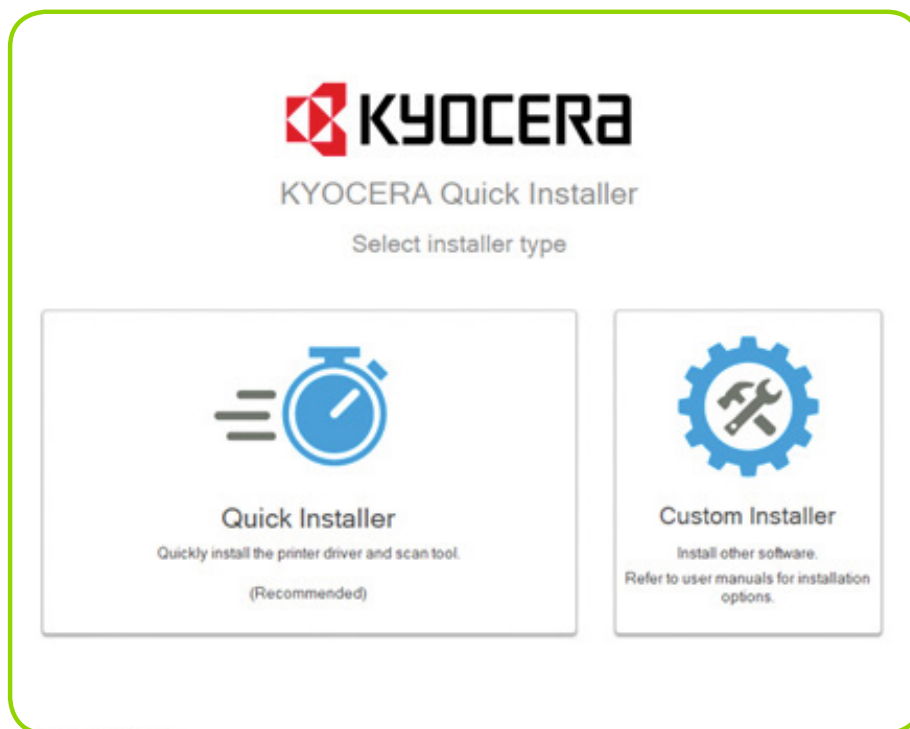
6. Accept the license agreement



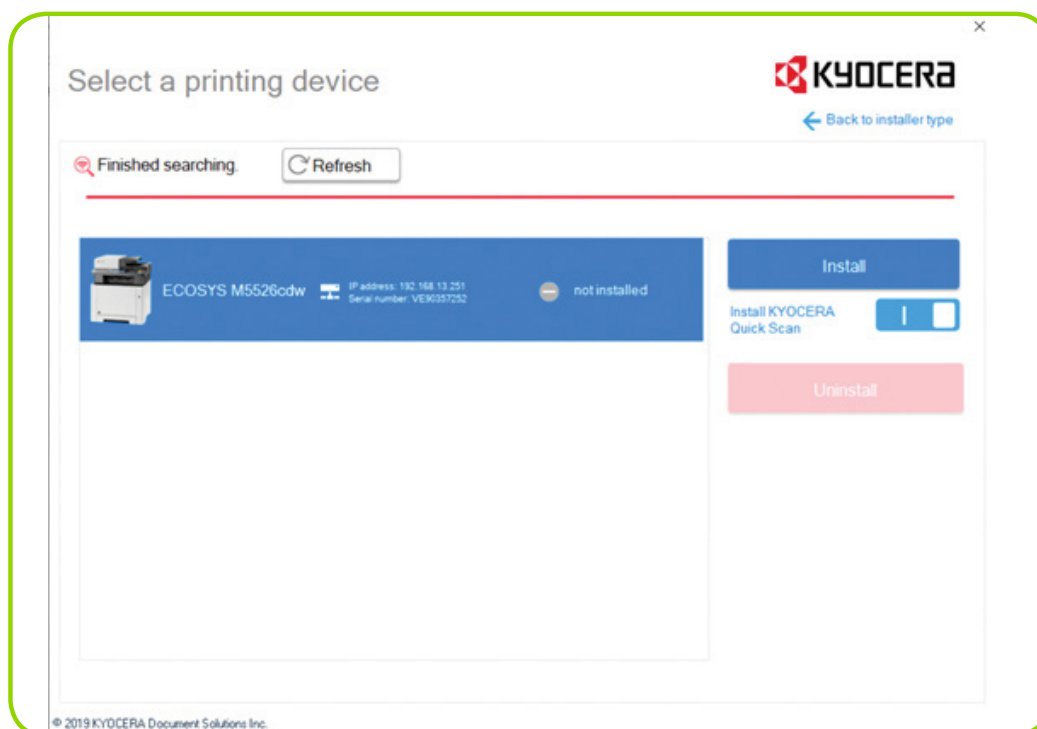
Visit us at vox.co.za



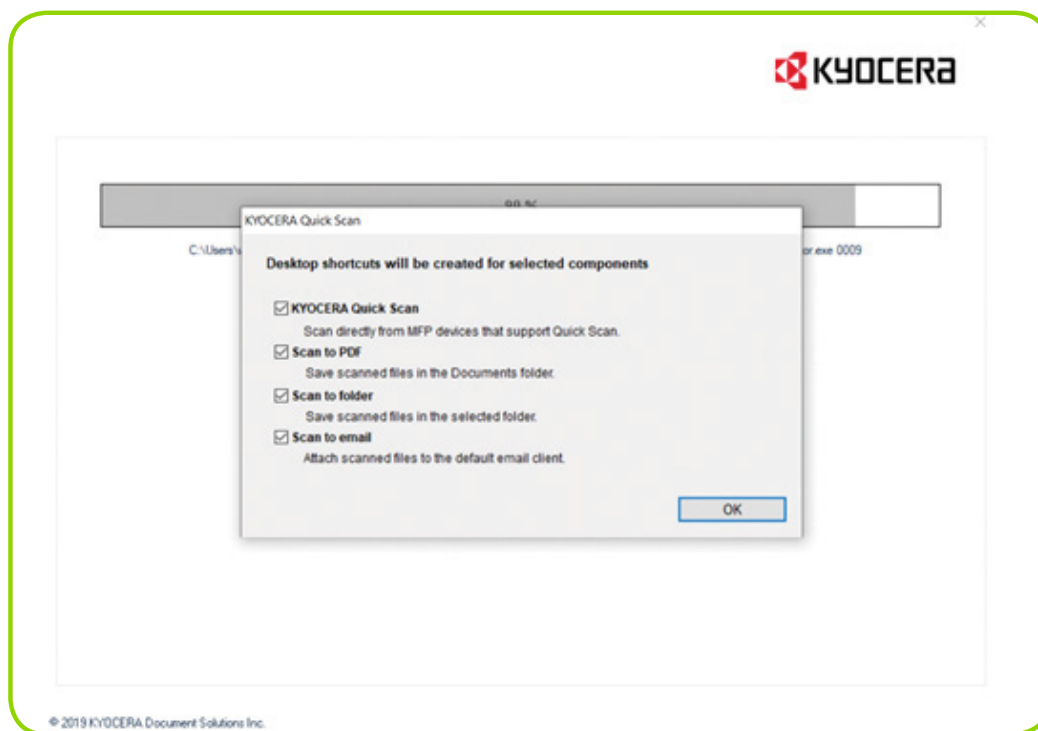
7. Select Quick Installer



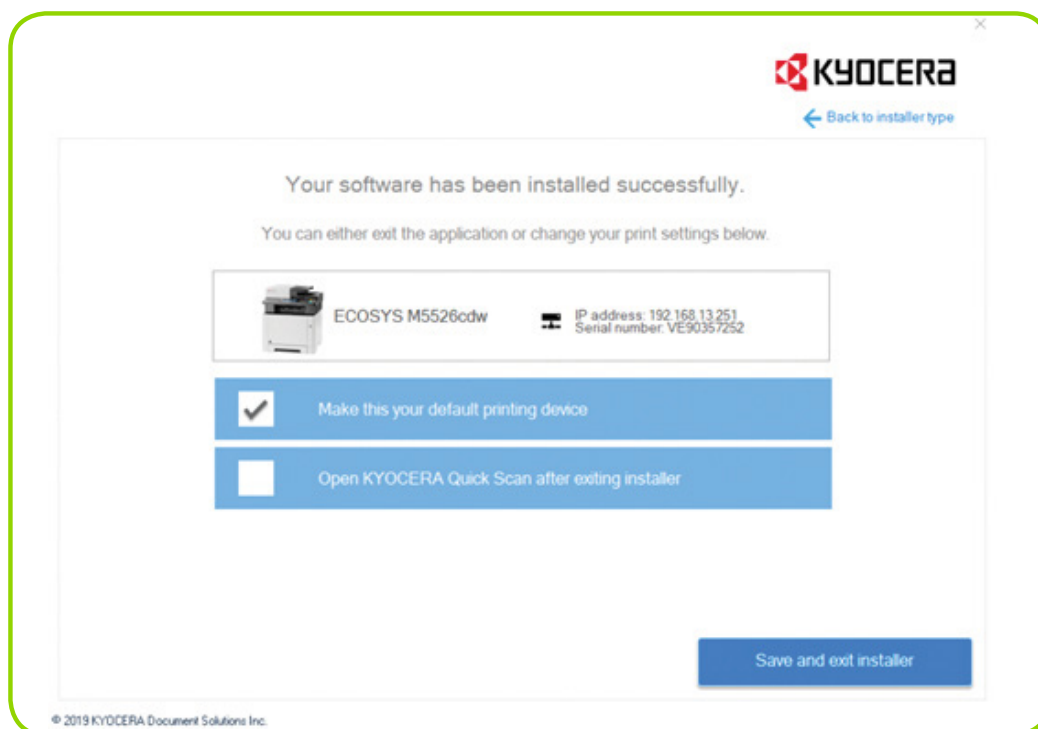
8. Select your printer and click on install



9. Click OK to add Shortcuts to the Desktop:



10. Save and Exit Installer

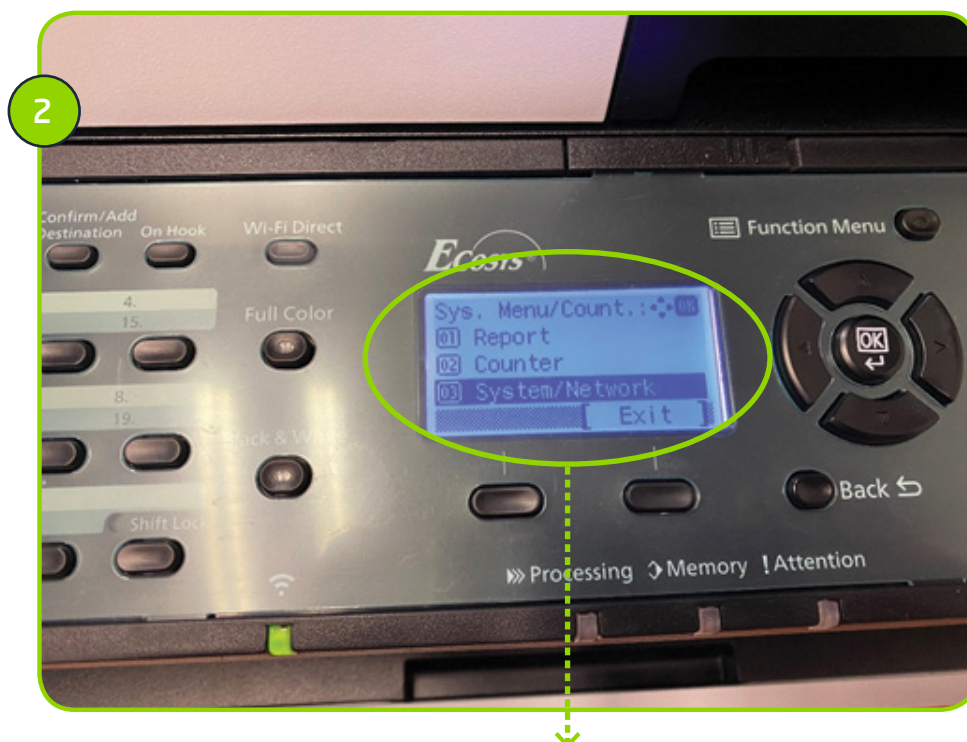


5. GETTING YOUR KYOCERA ECOSYS M5521CDW ONTO A WIRELESS NETWORK.

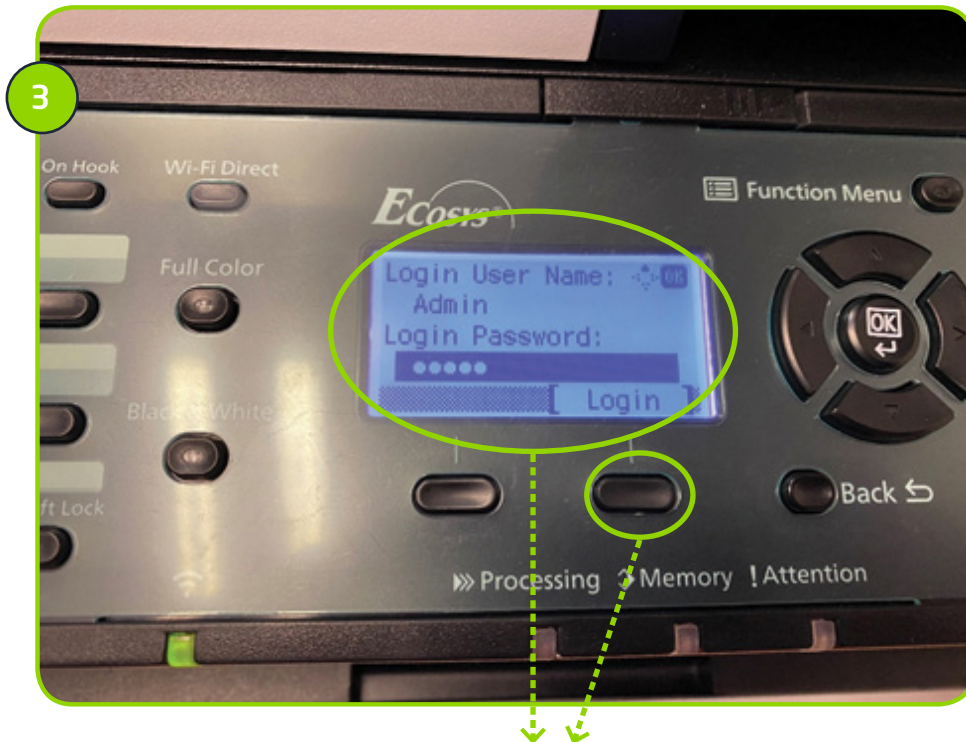
1. Enter the System Menu and access System/Network



SELECT THE SYSTEM MENU/
COUNTER BUTTON

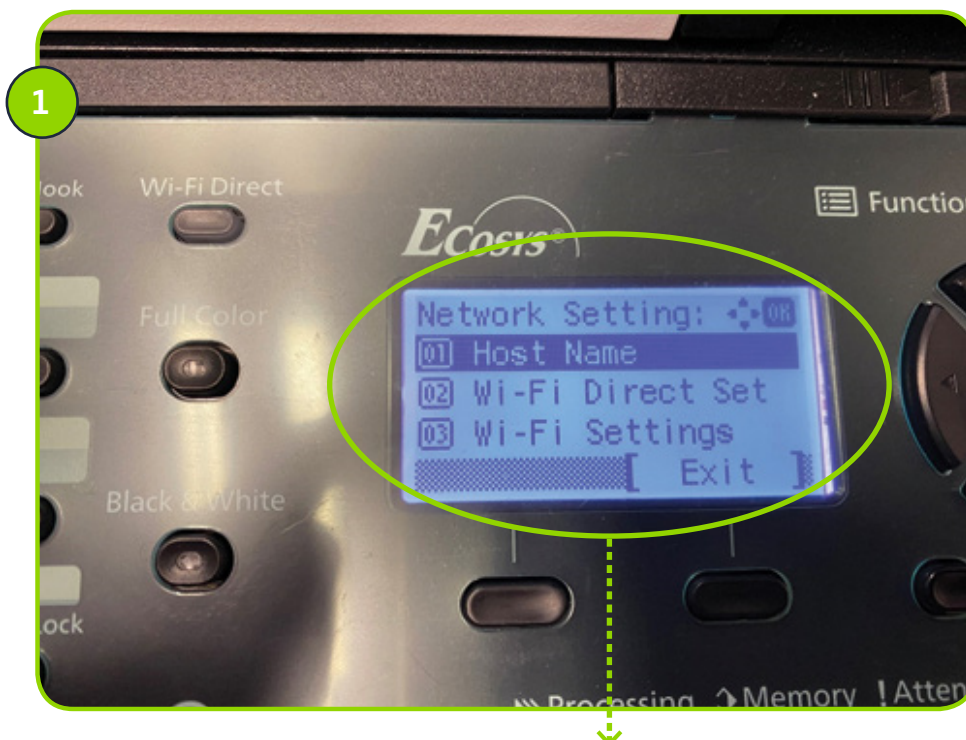


USING THE ARROW KEYS, NAVIGATE
DOWN TO OPTION 3 SYSTEM/NETWORK
AND SELECT OK

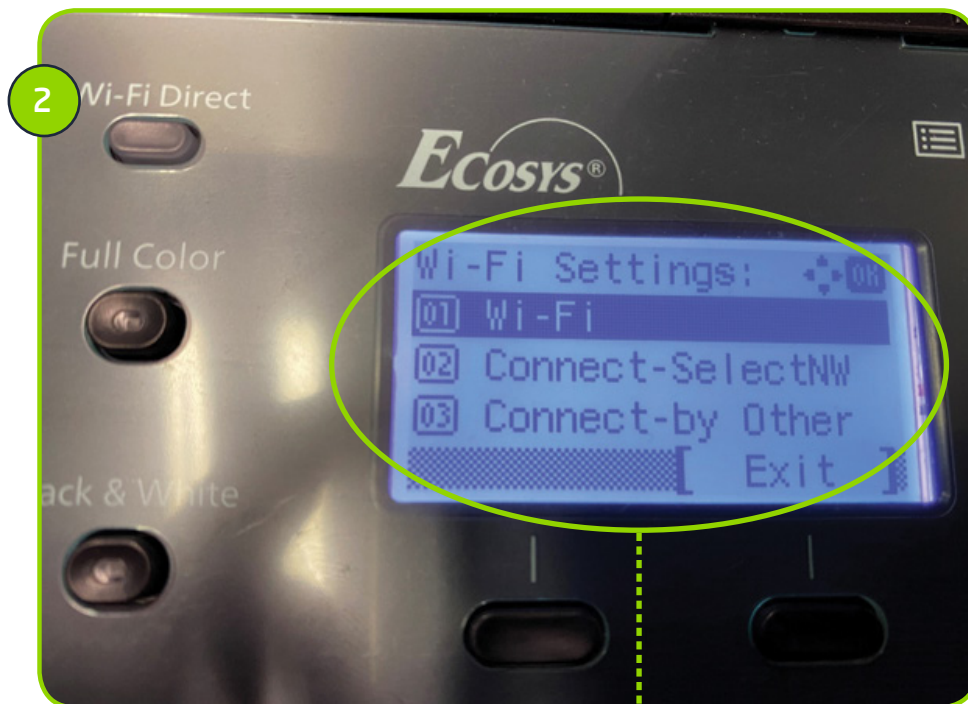


USING THE KEYPAD, ENTER THE USERNAME AS ADMIN AND THE PASSWORD AS ADMIN (USING THE ARROW KEY TO MOVE BETWEEN USERNAME AND PASSWORD. ONCE ALL TEST HAS BEEN ENTERED, SELECT THE BUTTON UNDERNEATH LOGIN

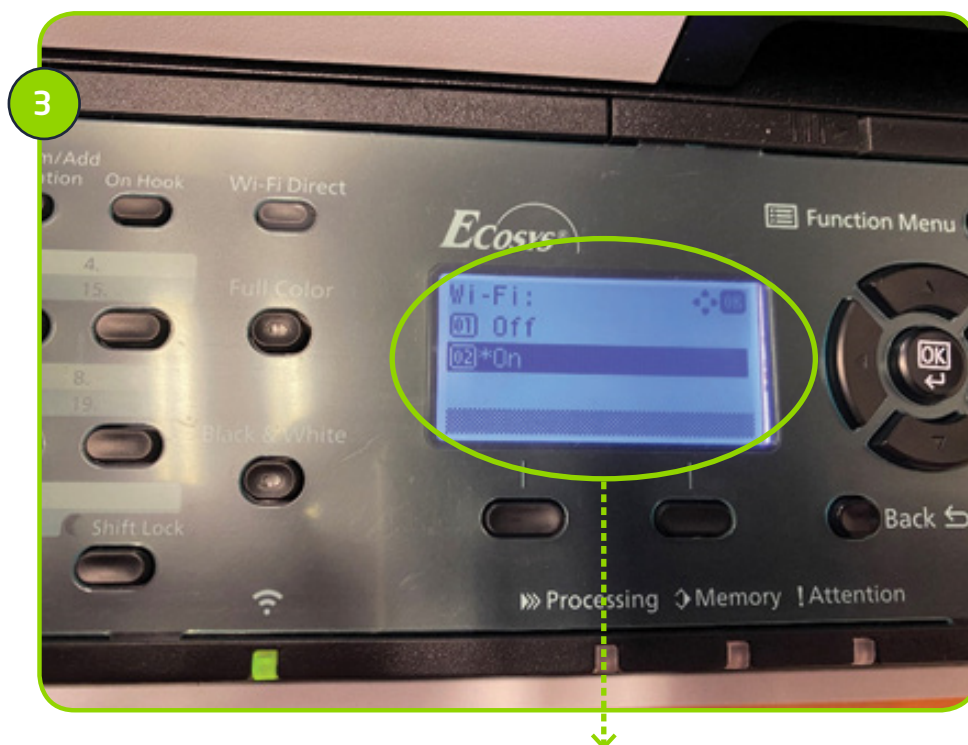
2. Access the Network settings



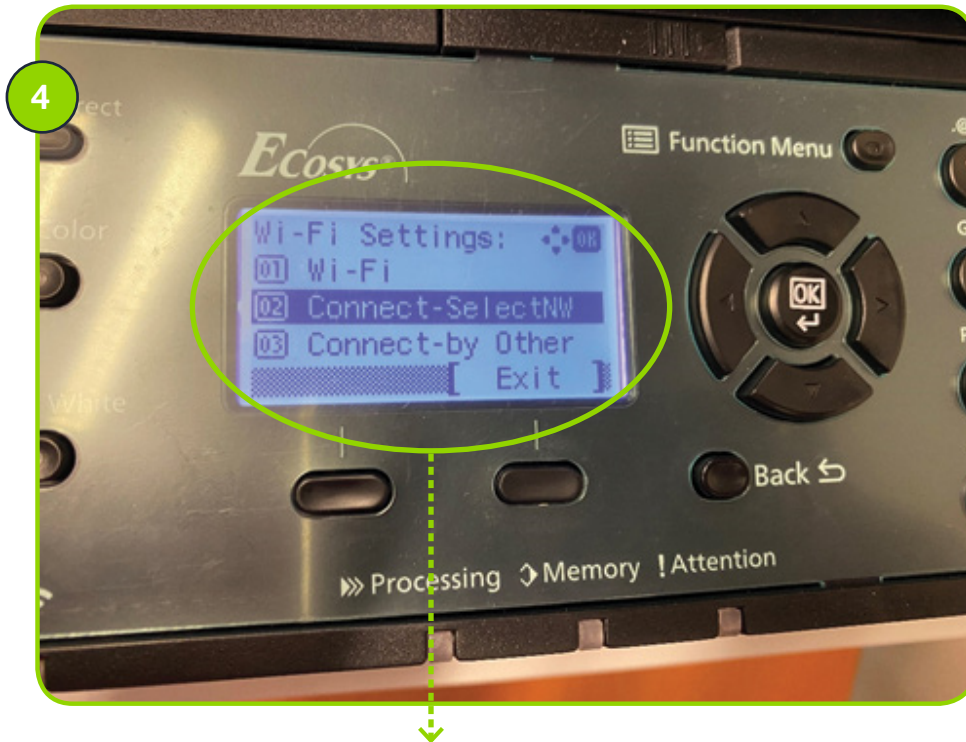
ONCE LOGGED IN, SCROLL DOWN USING THE ARROW KEY TO 03 WI-FI SETTINGS AND SELECT OK TO ACCESS THE SETTINGS



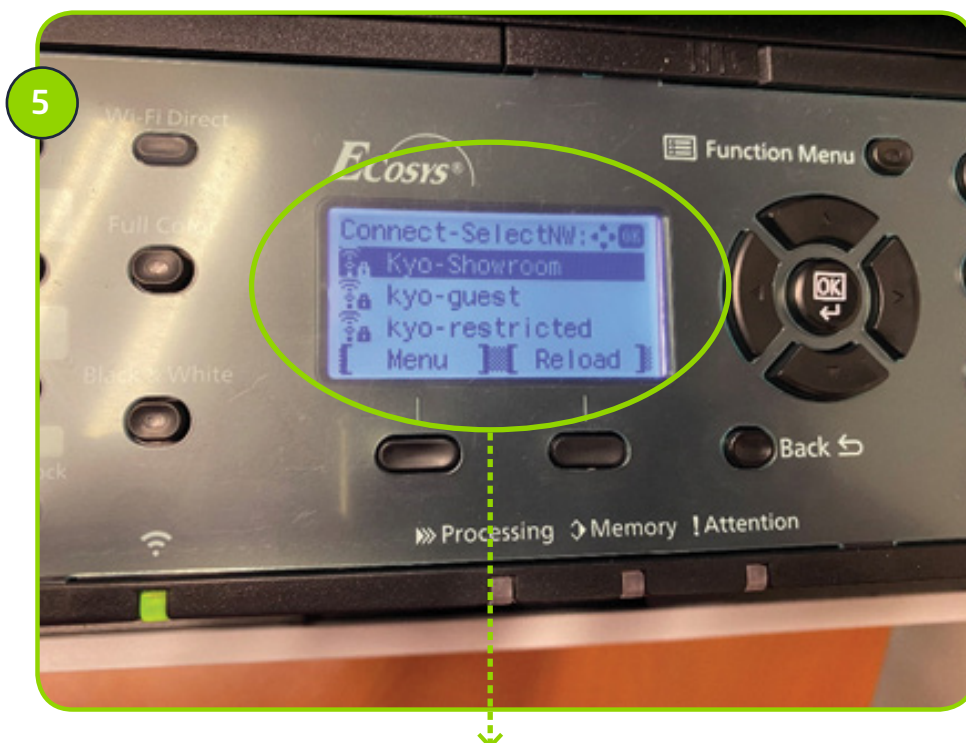
FROM THE WI-FI SETTINGS MENU, SELECT 01 WI-FI TO ENSURE THAT THAT WI-FI IS ENABLED (BY DEFAULT IS USUALLY IS)



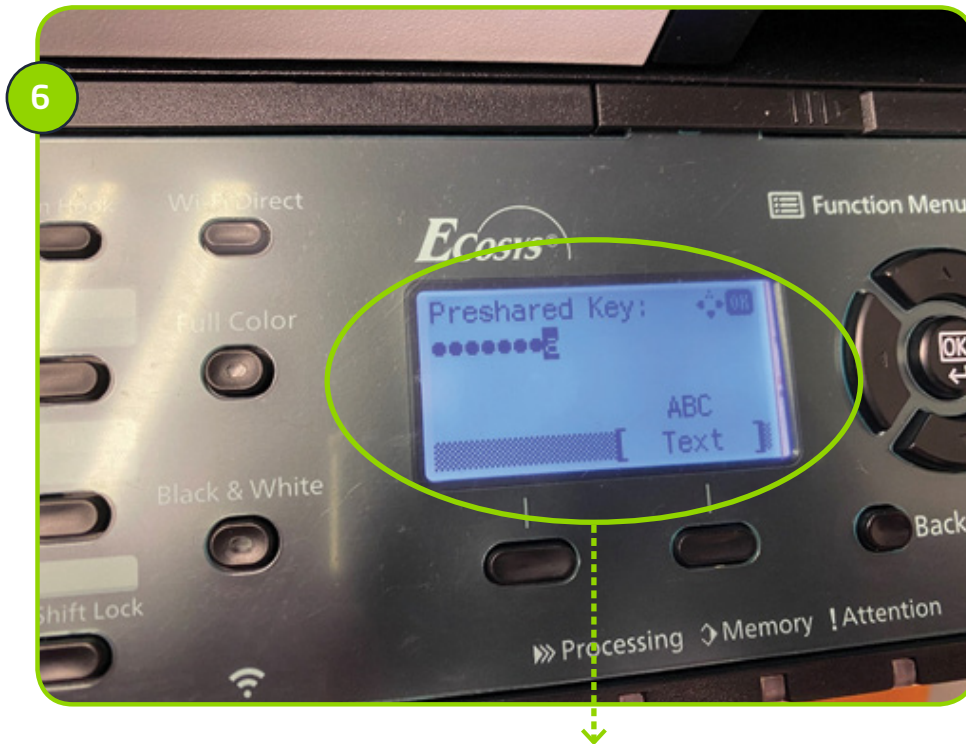
MAKE SURE WI-FI IS SET TO ON. IF NOT, USE THE ARROW KEYS TO MOVE DOWN TO 02 ON AND SELECT OK. IF WI-FI IS SET TO 02 ON, USE THE BACK BUTTON TO RETURN TO THE PREVIOUS SCREEN.



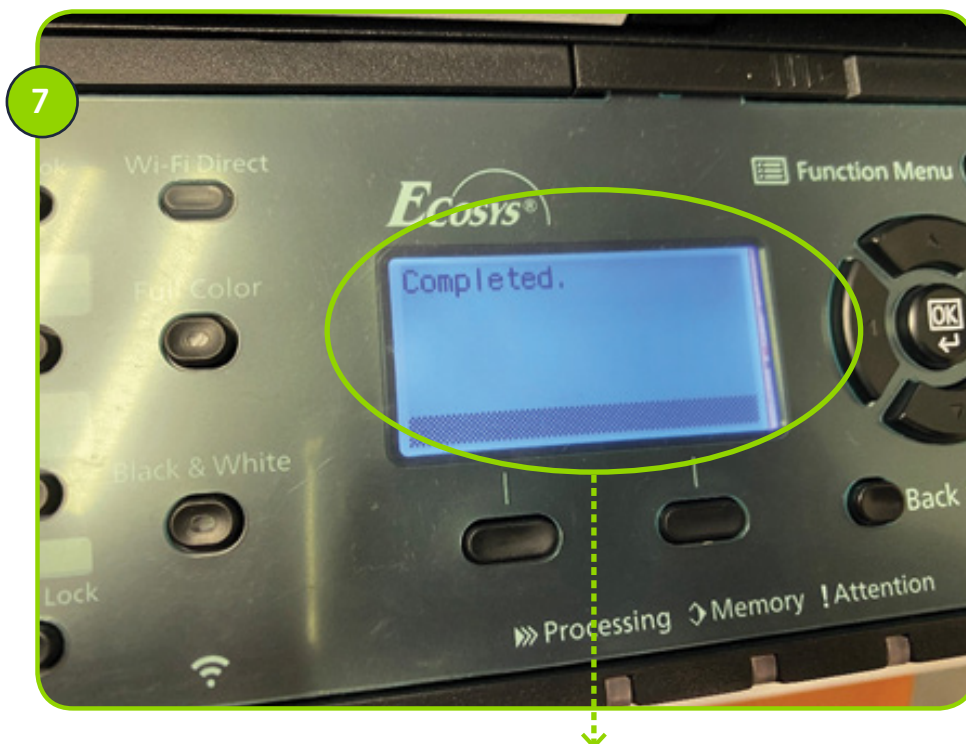
AFTER EITHER SELECTING TO ENABLE WI FI OR SELECTING TO RETURN TO WI FI SETTINGS, THE NEXT STEP WOULD BE TO CONNECT TO A WI FI NETWORK. TO DO THIS, USE THE ARROW KEYS TO NAVIGATE TO 02 CONNECT-SELECTNW AND PRESS OK



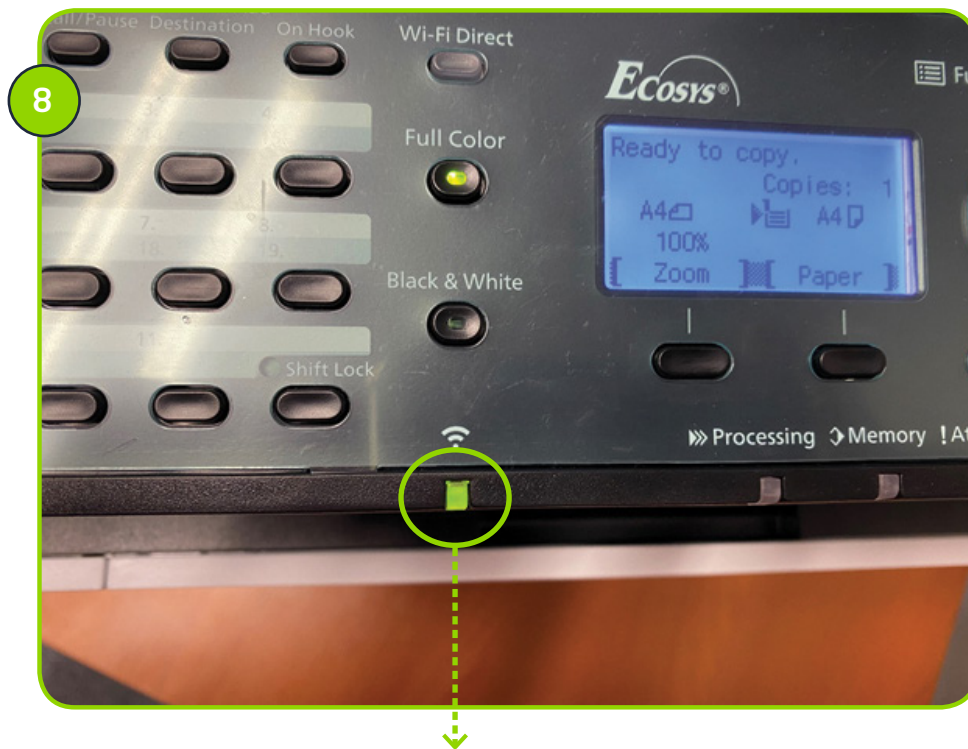
THE AVAILABLE NETWORKS WILL BE DISPLAYED, USE THE ARROW KEYS TO NAVIGATE TO DESIRED WI-FI NETWORK AND SELECT OK



WHEN THE REQUIRED WI-FI NETWORK IS SELECTED, YOU WILL NEED TO ENTER THE PASSWORD. THIS CAN BE DONE USING THE ALPHA-NUMERIC KEYPAD. ONCE THE PASSWORD HAS BEEN ENTERED, PRESS THE OK BUTTON.



AFTER THE PASSWORD HAS BEEN ENTERED, CONNECTING WILL BE DISPLAYED FOLLOWED BY COMPLETED. IF THE PASSWORD WAS ENTERED INCORRECTLY, YOU WILL BE PROMPTED TO RE-ENTER THE PASSWORD



ONCE ALL SETTINGS HAVE BEEN SUCCESSFULLY ENTERED, THE WI-FI LED WILL ILLUMINATE REFLECTING THAT THE DEVICE IS NOW CONNECTED TO THE REQUIRED WI-FI NETWORK. THE NEXT STEP WILL BE TO INSTALL THE PRINTER DRIVERS

**For more information on complementary or
alternative products, visit us at vox.co.za**

New Business Sales JHB : +27 (0) 87 805 5050
Consumer Support : +27 (0) 87 805 0530
Business Support : +27 (0) 87 805 0500
Email: info@voxtelecom.co.za

